

## British Columbia Breeding Bird Atlas

### Supplement Instructions for Finding a Square and Breeding Bird Evidence Data Entry.

# THE BIRDER'S GUIDE TO THE ATLAS



Type in the Atlas website in the address bar, click "Data and Maps" and select "Online Data Entry"  
Enter Participant Number & Password, and select "Login"

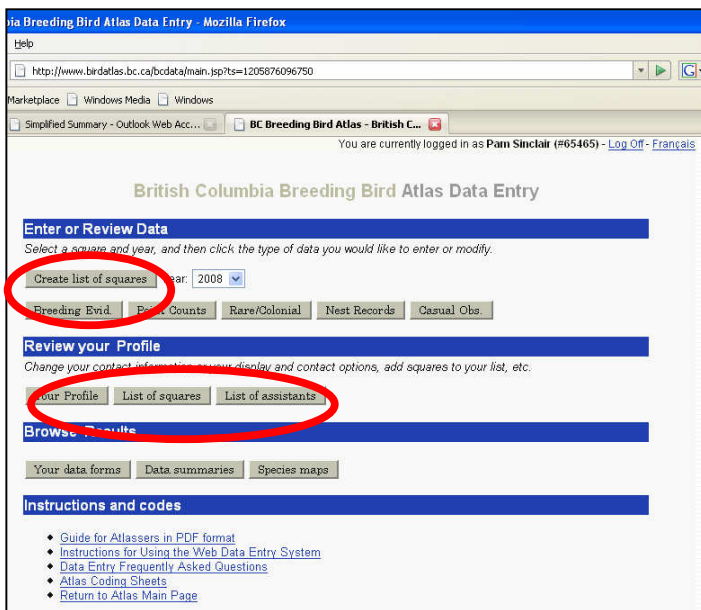
<http://www.birdatlas.bc.ca/bcdata/login.jsp>

### Find your square:

If this is your 1<sup>st</sup> time entering data:

The 1<sup>st</sup> page you view should look like this.

If you haven't entered any squares click "Create list of squares."



If you have entered square data previously, select the square from "Select a square" drop-down list.

Now you can modify and/or enter more information on that square.

If you know the square, click "List of Squares" under Review your Profile to add (or delete) a square.

Note\* you can find Instructions for Using the Web Data Entry System here

Enter the square # if you know it and "submit changes." You can give it a name for your reference

**OR**  
**If you don't know your square, click "Geographic conversion"**  
**A new window will open on the screen...**

### List of Atlas Squares

You can use this page to modify the list of squares that will be used for entering atlas data. You will only be able to enter data for squares that appear on this list, but there is no limit on the number of squares you can have. If you wish, you can give name your squares in order to remember what they are. If you leave the name blank, a default name will be given to the square. To add a square, simply fill in the empty row at the bottom and click the *submit changes* button.

If you don't know your square number, you can use the [atlas maps](#) or the [geographic conversion tool](#) to search for a square using coordinates or a square name.

Atlas ID Number **65465**

Atlas Region	Square Number	Square Name (optional)	Remove
New Square	Square Name (optional, leave blank to use default name)		
<input type="text"/>	<input type="text"/>		

Submit Changes    Reset Changes    Go Back



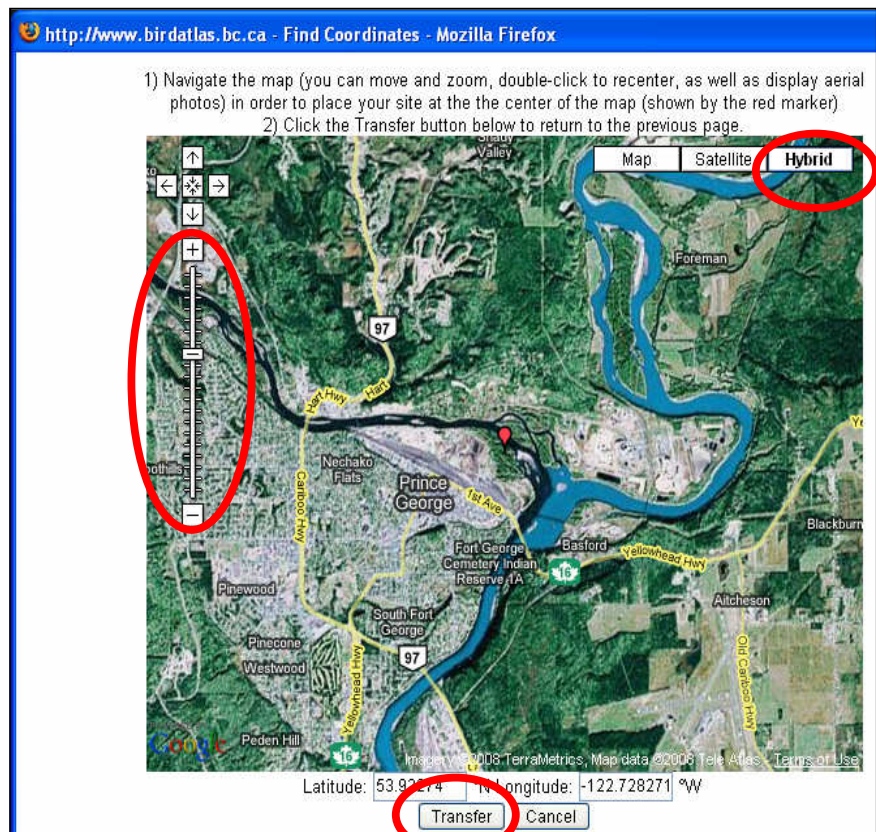
Click the link "Find coordinates on GoogleMaps" located under "Perform Conversion" button

A map image of BC should appear. You can double click (left button on your mouse) on one area to recenter the red marker and zoom in to the area you wish to view.

You can also use the (+) and (-) on the left side if the map to zoom in or out. (if you click and hold the mouse button, you can drag the map and move to a different location)

Selecting "Hybrid" in the top-right will show a satellite image with roads.

Click **Transfer** to go back to the other page and click "**Perform Conversion**" to find the square number of your location.



Here you can access lots of information.

The Square Number is 10CF23

UTM (actual location of the red marker) – used for point counts, or rare/colonial species forms.

Here you can also:

1. Download the Square PDF map find
2. View "Coordinates for Predefined Points" (to do Point Count Surveys)
3. View "Square Summary sheets"

Click "show coordinates on [GoogleMaps](#)" to see the square boundary.

Write the Atlas Square Number into the first screen you had open (the "List of Atlas Squares" shown below.)

Once you enter the square, "Submit Changes" and "Go Back." This will bring you back to the Main Data Entry page (image 1)

### Enter Breeding Bird Evidence Data:

On the main page "select a square" and click the form you want to enter. Click on Breeding Evidence form.

Here you may enter Breeding evidence. Enter the date, time and party hours. Hit "Save changes" or "Next page >>" to save and move to the next data page.

Breeding Evidence Form (square 10EE08, year 2008)  
Species Page 3 (Flycatchers to Waxwings)

Species	Visit	BE	Abund	Species	Visit	BE	Abund
Olive-sided Flycatcher				Barn Swallow	3	D	
Western Wood-Pewee	2	S		Black-capped Chickadee	1	S	
Yellow-bellied Flycatcher				Mountain Chickadee			
Alder Flycatcher	1	S		Chestnut-backed Chickadee			
Willow Flycatcher ‡				Boreal Chickadee			
Least Flycatcher				Red-breasted Nuthatch			
Hammond's Flycatcher				Brown Creeper			
Dusky Flycatcher				House Wren ‡			
Pacific-slope Flycatcher				Winter Wren	1	N	
Eastern Kingbird				Marsh Wren			
Cassin's Vireo				American Dipper			
Warbling Vireo	3	T		Golden-crowned Kinglet	2	P	
Red-eyed Vireo				Ruby-crowned Kinglet			
Gray Jay				Mountain Bluebird			
Steller's Jay	1	H		Townsend's Solitaire			
Blue Jay ‡				Swainson's Thrush			
Black-billed Magpie				Hermit Thrush			
American Crow				American Robin	3	NE	
Common Raven				Varied Thrush	1	S	
Horned Lark				European Starling			
Tree Swallow	1	AE		American Pipit			

Or, click the tab you want to jump to, e.g., "Species 3"  
Then simply fill out the visits and Breeding Evidence (BE). Fill in the Abundance (Abund) when you have sufficient knowledge of your square.

Click "Next page>>" or the tab you want to jump to.  
You can add comments or check "Codes" to read definitions of breeding evidence codes.

When you are finished, click "Finish" tab or "Finish Form"

Remember: Use one form per square per year!

After clicking Finish, you will get a summary.

Here you will see a Rare/Colonial Species for is required (needed because Cinnamon Teal is regionally rare – see Atlasser Guide for instructions to fill out the form).

You may also fill a Nest Record Card for American Robin.

Both forms can be filled in online by clicking the [links](#) in the appropriate sections

The Square Summary Sheet will give you a list of what atlassing has been completed in this square.

Click "Main Data Entry Page" to back to the main page and access to all forms & information.

British Columbia Breeding Bird Atlas Data Entry

You form contains records that still require additional documentation (click "Finish" to find out what species). Please fill in a rare colonial form for each of those observations.

Breeding Evidence Form (square 10EE08, year 2008)  
Return to Main Page / Additional Information

Thank you for submitting breeding evidence data for square 10EE08.

Please review below the species for which we would like to receive more information. If you do not wish to provide additional data for this square at this time, click here to return to the [Main Data Entry Page](#). You can also click here to enter/review [Point Count Data](#) or a [Rare/Colonial Species Form](#) for the current square.

Scroll down to the end of this page to view a [complete list of species](#) you found so far in this square.

[Return to first page](#) [Main Data Entry Page](#)

Rare/Colonial Species		Nest Record Cards	
SPECIES	BE	SPECIES	BE
Cinnamon Teal ‡	P	American Robin	NE

Note: † – rare breeder in British Columbia; \* – rare breeder in British Columbia, BASIC documentation required only; § – colonial species; ‡ – rare breeder at the regional level (as defined by the regional coordinator).

The above table lists species for which we would like you to provide additional information. You can fill in a [Rare/Colonial Species Form](#) for these species. If a species name appears by mistake, you can go back to the data form and modify your entry.

In collaboration with the Nest Record Scheme, we are also interested in receiving **Nest Record Cards** for any active nest that you find, especially for nests that you are able to visit 2 times or more. We would like to encourage you to fill in more than one card per species if you find multiple nests.

If you want to enter or modify nest records in this square, you can fill in a [Nest Record Card](#).

**List of all species that you have reported in this square**

You can also access the [Square Summary Sheet](#) to see what other atlassers have reported in this square.

Canada Goose (S)	Bald Eagle (P)	Steller's Jay (H)	Winter Wren (N)
Mallard (P)	Western Wood-Pewee (S)	Tree Swallow (AE)	Golden-crowned Kinglet (P)
Cinnamon Teal (P)	Alder Flycatcher (S)	Barn Swallow (D)	American Robin (NE)
Common Loon (X)	Warbling Vireo (T)	Black-capped Chickadee (S)	Varied Thrush (S)

Total: 16 species

Back at the main data entry page, you will have many options.

You can add more forms for your square by clicking on that form button.

You can review your profile. Change your personal info. **Add/delete squares here!**

You can Browse Results. Explore "Data Summaries" shown on the next page. (Image 2)

**Data Summaries:** This is an interesting area to explore and to see what species have been found.

To view information on squares in your region, select:  
**2.** View summary statistic "By Square" within Region [select your region from the drop-down list]

To view records of Breeding Evidence for all species in BC:  
**4.** View species list for "British Columbia"

To view significant species records in any square or block:  
**8.** Enter square number and click "view"

Try viewing different summaries and see what results are returned!

**This is just a supplementary guide to part of the online tools. You must use this guide PLUS online instructions to fill in any gaps or questions. READ the guide and EXPLORE the website!**